

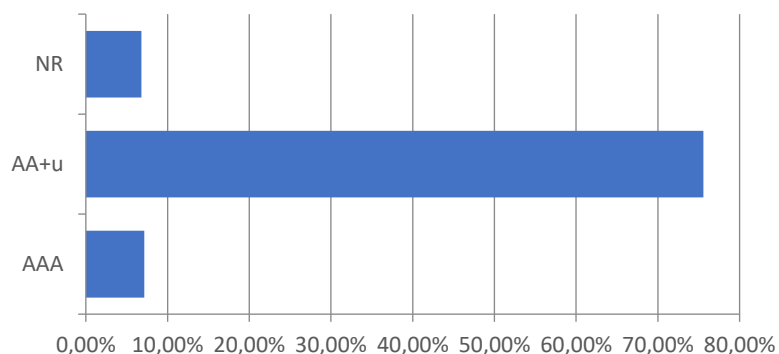
NAV date	28/06/2024	WAM**	116
Total NAV*	18.719.059,64 €	WAL***	116
NAV per share (cap.)	284,73 €	Net yield	3,61
NAV per share (dist.)	126,60 €		

\*The assets of the funds are valued by using the mark-to-market method with good quality market data; \*\*WAM = Weighted Average Maturity; \*\*\*WAL = Weighted Average Life

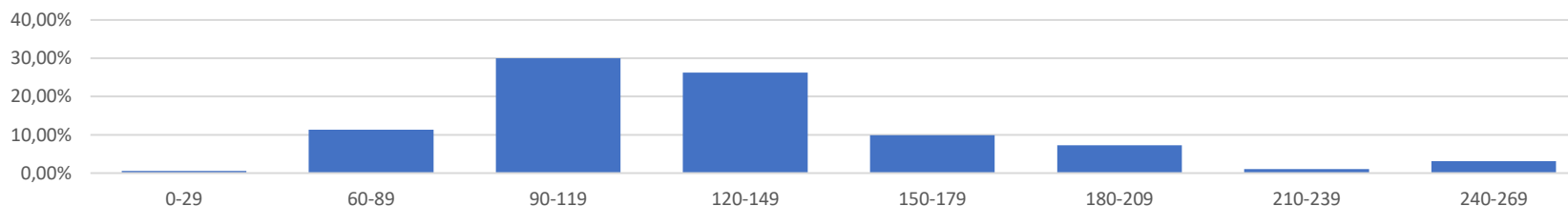
## 10 largest holdings

Name	Weight	Country	Maturity	Asset type
B 10/17/24	8,9%	US	17/10/2024	Government
B 10/03/24	7,9%	US	03/10/2024	Government
B 10/31/24	7,3%	US	31/10/2024	Government
B 11/21/24	7,1%	US	21/11/2024	Government
B 09/12/24	6,9%	US	12/09/2024	Government
B 10/10/24	6,8%	US	10/10/2024	Government
B 01/23/25	6,2%	US	23/01/2025	Government
B 10/24/24	5,3%	US	24/10/2024	Government
B 11/29/24	5,2%	US	29/11/2024	Government
B 11/14/24	4,7%	US	14/11/2024	Government

## Credit profile



## breakdown by number of days before maturity



## Disclaimer:

Past performance is neither an indicator nor a guarantee of future performance. Investment in monetary funds is not guaranteed and differs from investment in deposits. Therefore, this type of investment involves the risk that the invested capital may fluctuate. Moreover, the monetary fund mentioned in this document does not rely on external support to guarantee its liquidity or stabilize its net asset value per share. Investment in a monetary fund involves a capital risk borne by the investor. The Prospectus and the Key Information Document of the monetary fund hereby presented are available on the Internet site [www.bcee-am.lu](http://www.bcee-am.lu). In this report, particular attention was brought to the information accuracy check. However, BCEE Asset Management S.A. cannot provide any guarantee as far as the appropriateness, accuracy and comprehensiveness of the information communicated by third parties, which are included in this report and